

1

2

3

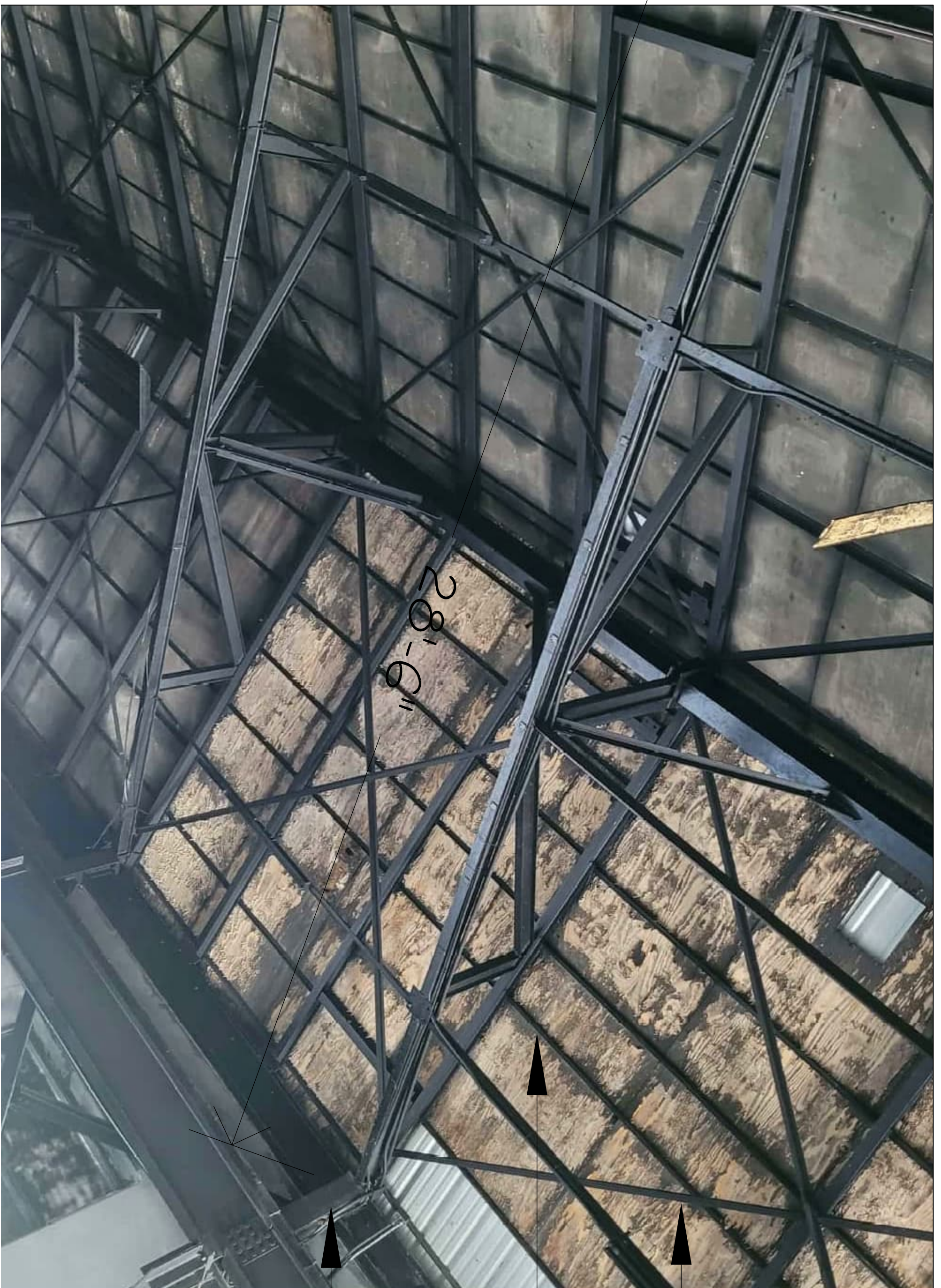
4



CRANE TO  
BE DISCARDED

CRANE RAILS TO  
BE DISCARDED

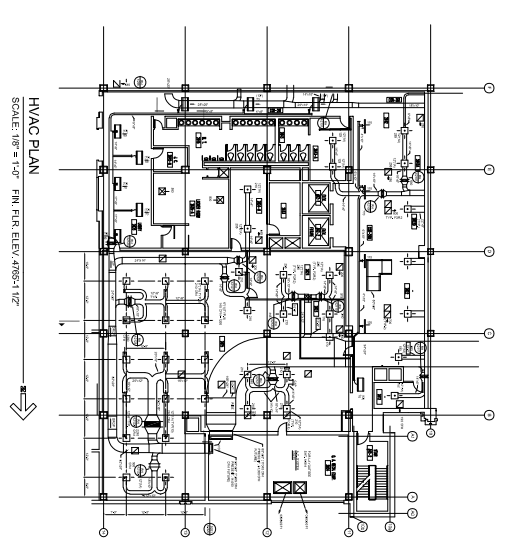
CAREFULLY DISMANTLE 4  
NUMBER TRUSSES  
COMPLETE WITH  
SUPPORTING COLUMNS.  
DELIVER TO BVIEC AT  
POCKWOOD POND.



ALL "X" AND BOTTOM  
CHORD BRACING TO  
BE RETAINED. DELIVER TO  
BVIEC AT POCKWOOD  
POND.

PURLINS &  
ROOFING TO BE  
REMOVED &  
DISCARDED.

W 12 x 40  
COLUMNS @  
16'-4" O/C.



**SYSTEMS ENGINEERING LTD.**  
P.O. BOX 3891  
SEA COWS BAY  
TORTOLA, VG 1110, B.V.I.  
TEL: 284.494.2987  
FAX: 284.494.0775  
EMAIL: [sytmeng@systemscanibbean.com](mailto:sytmeng@systemscanibbean.com)

**NOTES**

01 DO NOT USE THIS DRAWING FOR CONSTRUCTION UNLESS THE WORDS "CONSTRUCTION SET" APPEARS IN THE REVISIONS COLUMN

02

**BVIEC DEMOLITION WORKS**

LONG BUSH  
TORTOLA  
BVI

**PRELIMINARY ONLY  
NOT FOR CONSTRUCTION**

DESIGNER:	RT
DRAWN:	BM
JOB REF:	
DATE:	24 02
SCALE:	AS NOTED
DWG NAME:	
DWG NO:	

**WORKS  
CONTRACT 1**

**S-103**

GA: MAIN LEVEL FLOOR PLAN

SCALE : 1" = 1'-0"

VERS. 3.0 - 071219